

Operating Instructions

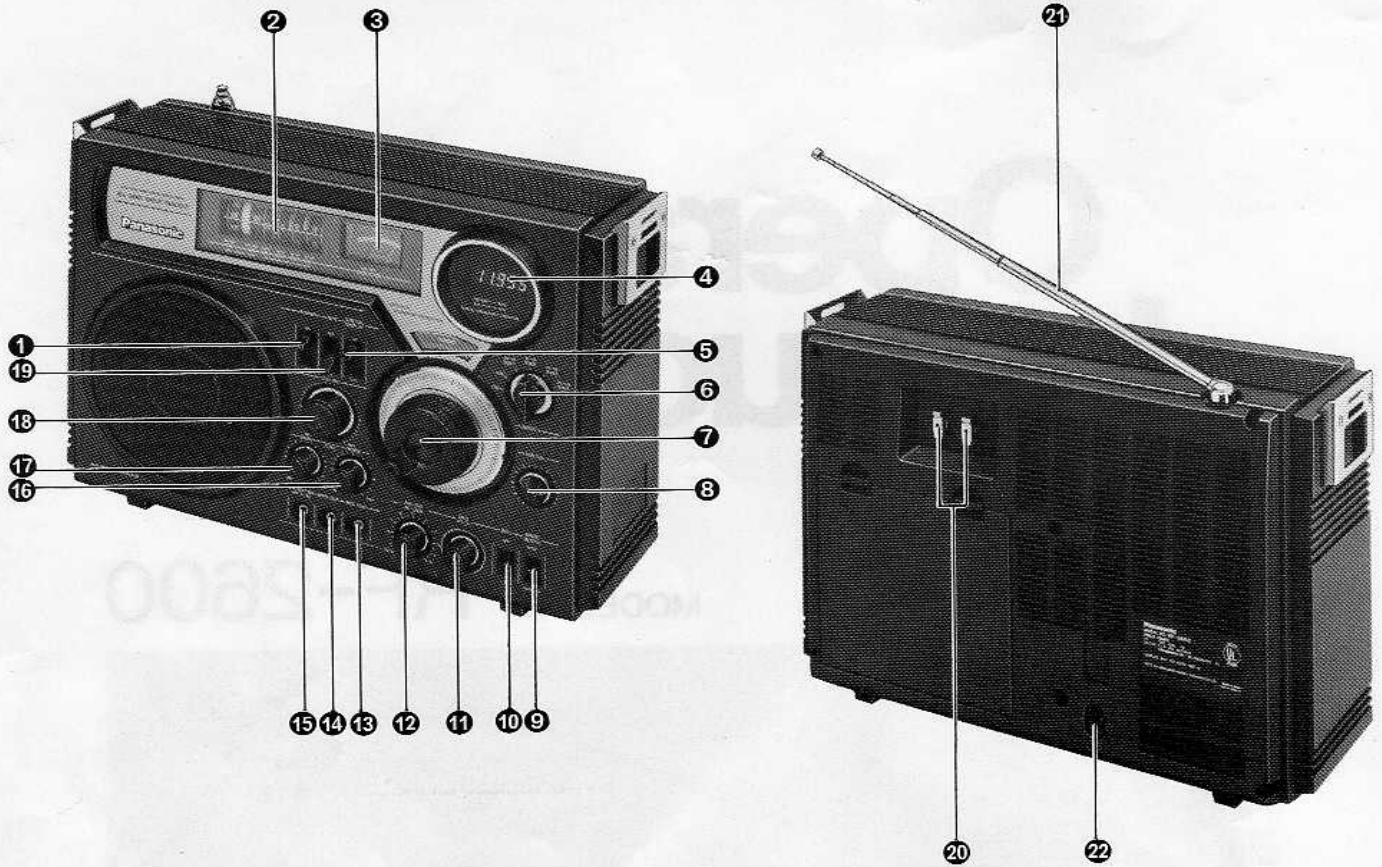
MODEL NO. RF-2600



Panasonic[®]

Read these instructions completely before operating this set.

LOCATION OF CONTROLS



- ① Power On/Off Switch
- ② Tuning Scale
- ③ Tuning/Battery Indicator
- ④ Digital Frequency Display
- ⑤ Display On/Off Switch
- ⑥ Band Selector (FM/AM/SW1-4)
- ⑦ Tuning Control
- ⑧ SW Calibrator (SW1-4)
- ⑨ Band Width Switch (WIDE-NARROW)
- ⑩ BFO Switch
- ⑪ BFO Pitch Control

- ⑫ RF Gain Control (AM/SW)
- ⑬ Recording Output Jack
- ⑭ Multiplex Output Jack
- ⑮ Earphone/External Speaker Jack
- ⑯ Treble Control
- ⑰ Bass Control
- ⑱ Volume Control
- ⑲ Light Switch
- ⑳ External Antenna Terminals
- ㉑ Telescopic Antenna
- ㉒ AC Input Jack

The serial number of this product may be found on the label affixed inside the battery compartment. You should note the serial number of this unit in the space provided and retain this book as a permanent record of your purchase to aid in identification in the event of theft.

MODEL NUMBER RF-2600 SERIAL NUMBER _____

POWER SUPPLY

Your Panasonic radio receiver RF-2600 operates from either of two sources; 120 volt AC household power, or 6 "D" size dry batteries.

Battery Operation

- 1) Open the battery compartment cover by depressing its two latches and pulling them in the direction of the arrows. (Fig. 1)
- 2) Insert 6 "D" size (Panasonic UM-1 or equivalent) batteries into the battery compartment. Observe the correct polarities. (Fig. 2) Place them in the numerical order shown in Fig. 2.
- 3) Replace the compartment cover.

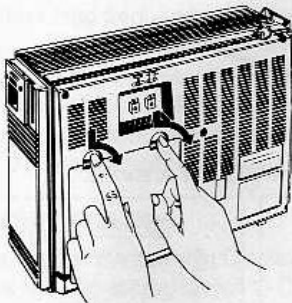


Fig. 1

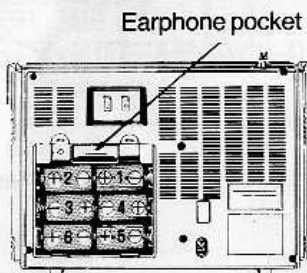
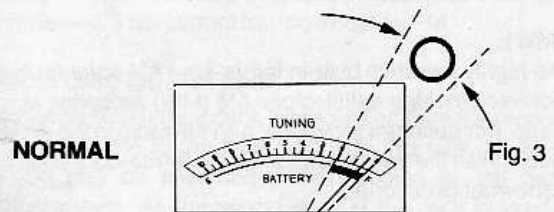


Fig. 2

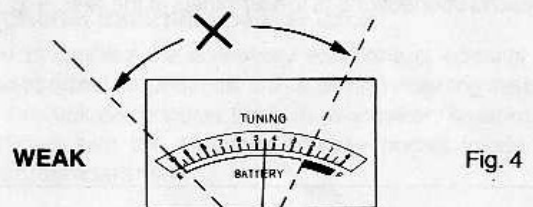
- Note:
- When removing the batteries from the compartment, take them out against the numerical order.
 - To operate on battery power, make sure to disconnect the AC power cord from both AC Input Jack ② and household AC power outlet.

To check the battery condition:

- 1) Turn the Power On/Off Switch ① to ON.
- 2) Set the receiver not to tune in any station. The Tuning/Battery Indicator ③ will then show the battery condition.



When the indicator points within the "O" range as shown above, the batteries can be still used.



When the indicator points within the "X" range as shown above, replace all the batteries with new ones.

AC Power Operation

- Connect the accessory AC power cord between a 120-volt AC household outlet and the AC Input Jack ②.
- When the power cord is plugged into the AC Input Jack ②, the power supply is automatically switched from battery to AC.

Note: Unplug the AC power cord from the electrical outlet when you are not using your unit.

WARNING: TO PREVENT FIRE OR SHOCK HAZARD, DO NOT EXPOSE THIS PRODUCT TO RAIN OR MOISTURE.

ANTENNAS

FM:

- Pull out the Telescopic Antenna ② and adjust its length and angle for optimum reception.
- If you wish to improve reception further, connect a suitable FM antenna to the External Antenna Terminals ⑩ on the rear, as shown in Fig. 6.

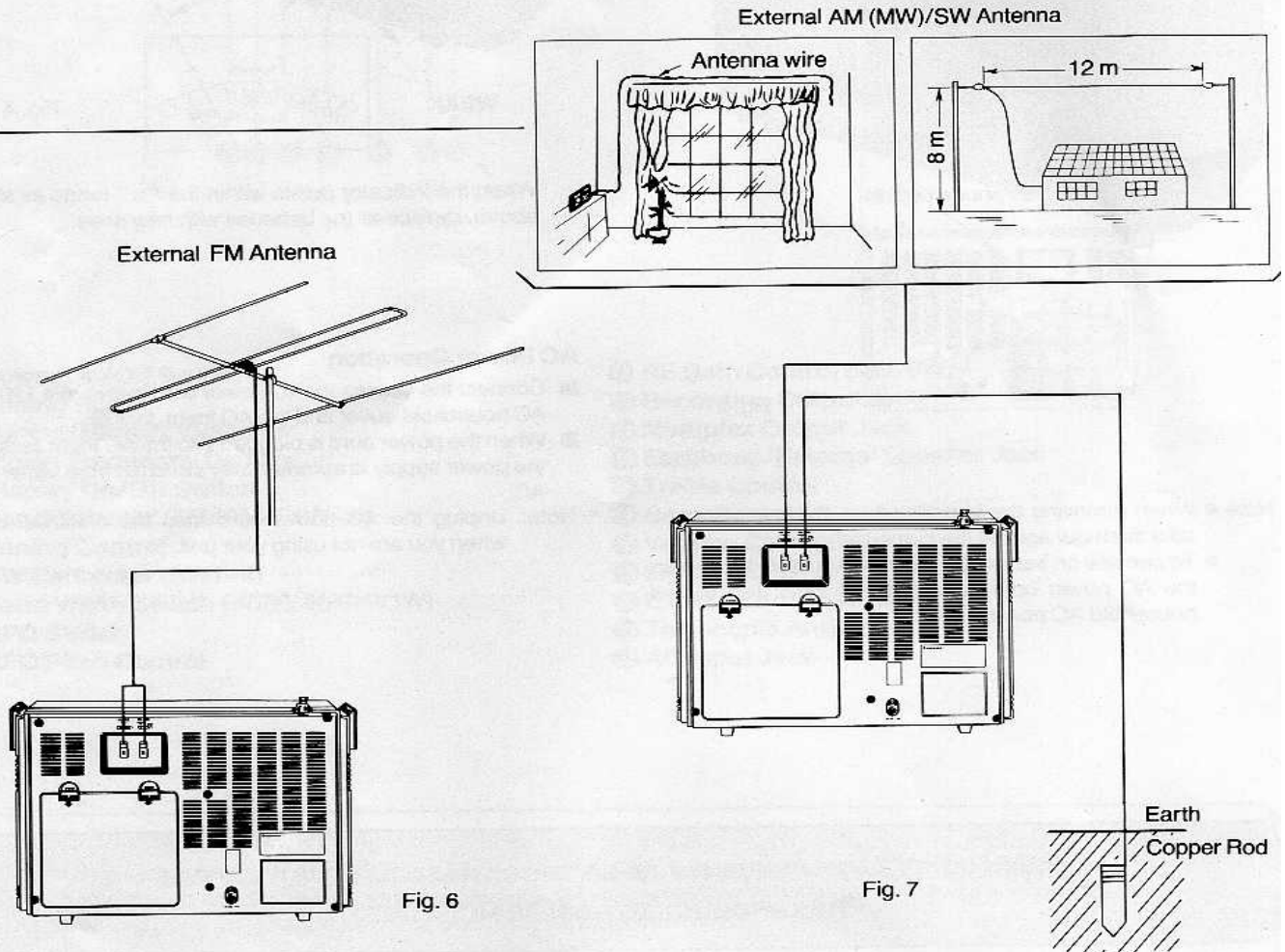
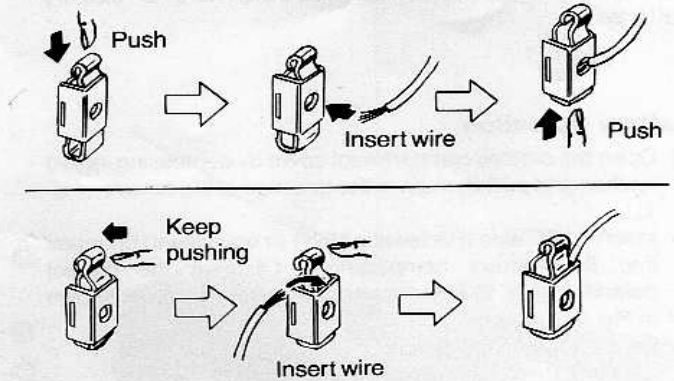
AM (MW):

- The highly sensitive built-in ferrite-core AM antenna in your receiver provides satisfactory AM (MW) reception in most areas. For optimum reception, turn the radio in the direction which gives the best results since the ferrite-core antenna is somewhat directional.
- To further improve reception, connect a suitable AM antenna and the earth to the External Antenna Terminals ⑩ on the rear. (Fig. 7)

SW (including SSB and CW):

- Extend the Telescopic Antenna ② fully and keep it vertical.
- To further improve reception, perform outdoor antenna and ground connections to the terminals at the rear. (Fig. 7)

How to Connect Antenna Wire to Terminal



CONTROLS AND FUNCTIONS

1 Power On/Off Switch

Turn the radio on and off.

2 Tuning Scale

SW1-4: 3.9-28 MHz
AM (MW): 525-1610 kHz
FM: 88-108 MHz

3 Tuning/Battery Indicator

Acts as tuning and battery check meter. When a station received, the pointer deflects to the left showing the relative strength; the stronger the station's signal, the greater the deflection to the left. When no station is received, the meter indicates the battery condition.

4 Digital Frequency Display

Indicates the tuned frequency of all the bands as follows.

SW1-4 —a decimal fraction in MHz
(to three places of decimals)
FM —a decimal fraction in MHz
(to one place of decimals)
AM (MW) —an integer of three or four figures in kHz.

5 Display On/Off Switch

Turns the Digital Frequency Display 4 on and off. For continuous display, set the switch to ON (up); Turn this switch off to save the battery power when the display is unnecessary.

6 Band Selector (FM/AM/SW1-4)

Set to the desired band.

7 Tuning Control

Use for the FM/AM (MW)/SW1-4 reception.

8 SW Calibrator (SW1-4)

Use only for SW1-4 reception.
If the digital frequency display does not agree with the frequency of a known station, correct the error by turning the calibrator until the best reception is obtained. (See page 5.)

9 Band Width Switch

Has a function as a band-width switch on AM (MW) and SW. Normally leave it in the WIDE (up) position.
●On AM and SW, if your received station is interfered by another adjacent station or so, then move the switch to "NARROW" (down).

10 BFO Switch

Turn the BFO (Beat Frequency Oscillator) on and off. For SSB or CW reception on SW, set the switch to "ON". When receiving neither SSB nor CW, be sure to keep the switch at "OFF".

11 BFO Pitch Control

Used to receive SSB and CW signals. Properly tune to the desired SSB or CW signals with the BFO Switch 10 "ON", then carefully rotate this control for optimum signal reception.

12 RF Gain Control (AM/SW)

Adjusts the receiver sensitivity for AM (MW) or SW (including SSB and CW) reception. Normally keep it in the full-clockwise (DX) position. If the station is sufficiently strong to cause overloading or distortion in the receiver, slowly rotate this control counterclockwise until clear sound is obtained. This control has no effect on FM.

13 Recording Output Jack

Connects with a tape deck for recording from the receiver. Plug the cable to the tape deck into this jack. Radio programs can be recorded while listening at the desired volume level. As the sound level at this jack is fixed, the recording level should be adjusted by using the control(s) on the tape deck.

14 Multiplex Output Jack

Used to connect an FM stereo multiplex adaptor for enjoyment of FM stereo programs.

15 Earphone/External Speaker Jack

Used to connect the accessory earphone or optional external speaker (impedance: 3.2-8 ohms.) Inserting the plug into this jack disconnects the built-in speaker. To store the earphone, use the earphone storage pocket inside the battery compartment.

16 Treble Control

Regulates the high tone.

17 Bass Control

Regulates the low tone.

18 Volume Control

19 Light Switch

When tuning in the dark, set to "ON". The Tuning/Battery Indicator 3 and Tuning Scale 2 will light up. Turn off when illumination is not necessary.

20 External Antenna Terminals

Effective for the FM, AM (MW) and SW bands. If the desired station is too weak or too distant for the receiver to provide satisfactory reception, connect an appropriate external antenna (and an earth wire) to these terminals. (See page 3.)

21 Telescopic antenna

Effective on FM/SW1-4. For the best reception, pull out the Telescopic Antenna and position it in the direction which provides the optimum reception.

22 AC Input Jack

To operate on AC, connect the accessory AC power cord between this jack and your household AC electrical outlet. When the plug is inserted in this jack, both the internal batteries and external DC source are automatically disconnected.

RECEIVER OPERATION

Operate your Panasonic RF-2600 radio receiver as you would do with any ordinary radio. To obtain the best performance and take advantage of some of the high-performance features of the receiver, keep in mind the following operating hints.

FM Reception:

Control	Position
Band Selector ⑤	FM
Display On/Off Switch ⑤	ON (only during tuning)
Tuning Control ⑦	Desired station
Volume Control ⑱	Desired level
Bass ⑰ and Treble ⑲	
Controls	Pleasant level

Note: Extend the Telescopic Antenna ④ fully and adjust its length and angle for optimum reception. (When using the external antenna, refer to the instructions of ANTENNAS on page 3.)

AM (MW) Reception:

Control	Position
Band Selector ⑤	AM
RF Gain Control ⑫	DX (full clockwise)
BFO Switch ⑩	OFF
Display On/Off Switch ⑤	ON (only during tuning)
Tuning Control ⑦	Desired station
Volume Control ⑱	Desired level
Bass ⑰ and Treble ⑲	
Controls	Pleasant level

To reduce interferences:

- Set the Band Width Switch ⑨ to "NARROW", and retune.
- Turn the RF Gain Control ⑫ counterclockwise until the interfering station disappears.
- Reposition the built-in ferrite-core antenna so that the interference is minimal.

SW Reception

Control	Position
SW Calibrator ③	Center
Band Selector ⑤	SW1-4
RF Gain Control ⑫	DX (full clockwise)
BFO Switch ⑩	OFF
Band Width Switch ⑨	WIDE (up)
Display On/Off Switch ⑤	ON (only during tuning)
Tuning Control ⑦	Desired station
Volume Control ⑱	Desired level
Bass ⑰ and Treble ⑲	
Controls	Pleasant level

To correct a frequency error

1. Tune to any already-known frequency on SW1-4 and make sure the correct frequency is displayed.
2. Watch the Tuning Indicator ③ while slowly turning the SW1-4 Calibrator ③ with the Display On/Off Switch ⑤ at "ON".

When the meter pointer deflects to the leftmost, the best-tuned frequency strictly accords with the display.

Note: ● The standard signals would be received, and those signals may be helpfully used for the error correction. They are the National Bureau of Standards' radio station WWV by 5, 10, and 15 MHz.

- If the Tuning Indicator ③ is difficult to read because of too strong signals, turn the AM RF Gain Control ⑫ counterclockwise to decrease the receiver sensitivity.
- Changing to another band may require readjusting of the SW1-4 Calibrator ③.

To reduce interference:

- Set the Band Width Switch ⑨ to "NARROW" (down), and retune.
- Rotate the RF Gain Control ⑫ counterclockwise until the interfering station disappears.

To decrease background noise:

- Connect the external antenna to the External Antenna Terminals ⑳ to improve the received signals.
- Turn the Treble Control ⑲ counterclockwise.
- If the counter noise occurs, turn the Display On/Off Switch ⑤ off.
- Make sure the antenna and earth are properly connected.

SSB and CW Reception

Set up the receiver in the same manner as SW1-4 reception, and then follow the procedure.

Control	Position
Tuning Control ⑦	Desired signal
BFO Switch ⑩	ON
BFO Pitch Control ⑪	Position where the received signal becomes clear.

Note:

- If received signals are too strong to be clearly heard, rotate the RF Gain Control ⑫ counterclockwise until distinct, pleasant sound is obtained.
- In receiving two-way communication signals, a possible difference between the two frequencies may demand another BFO Pitch Control ⑪ adjustment.

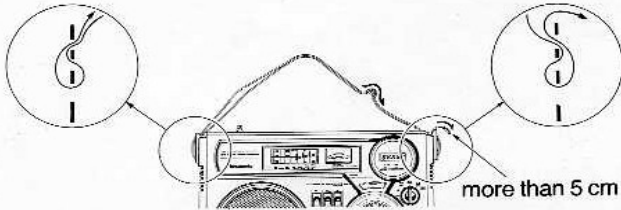
Note:

- SW (including SSB and CW) reception is greatly affected by a connected antenna. Therefore, to obtain the best possible reception, proper antennas are required.
- Some 30-minute passage after power application will provide essentially stable receiver operation.
- Turning the Display On/Off Switch ⑤ on and off may slightly drift the displayed frequency.

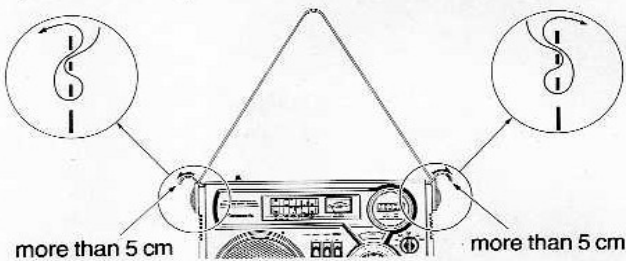
ATTACHING THE SHOULDER STRAP

Fix the accessory strap to the receiver as illustrated in the figures below. The length of the strap can be adjusted with the buckles.

* Extend the strap



* Shorten the strap



PRECAUTIONS

For your safety and to prevent damage to the set:

- Do not connect the set to any AC outlet other than the regular AC 120 V, 60Hz.
- Avoid cuts, scratches, or poor connections in the AC power cord which may result in possible fire or electric shock hazard. Also, excessive bending, pulling, or slicing of the cord should be avoided.
- Do not unplug the AC power cord by pulling on the cord. To do so may cause premature failure or shock hazard.
- Do not operate the set on AC power in a bathroom as a potential shock hazard may result.

HELPFUL HINTS

- If the set is not used for a long time or is used only from an AC power source, remove all the batteries to prevent potential damage due to possible battery leakage.
- When the sound volume begins to lower, it is advisable to replace all the batteries with new ones before they are completely discharged.
- Do not subject the set to a temperature of over 60°C (140°F), because characteristics of the internal parts may be adversely affected by heat.
Especially, never leave the set in a car exposed to direct sunlight for a long time with all the doors and windows closed. The cabinet may become deformed, and deterioration of the performance may result.
- Do not use benzine, thinner, or the like, or any abrasive powder to clean the cabinet. Wipe it with soft cloth moistened with a mild soap and water solution.

PRODUCT SERVICE

Should your Panasonic product ever require service, refer to the Directory of Authorized Panasonic Servicenters enclosed with this radio or contact your Panasonic dealer for detailed instructions.

SERIAL NUMBER: Located on the label affixed inside the battery compartment.